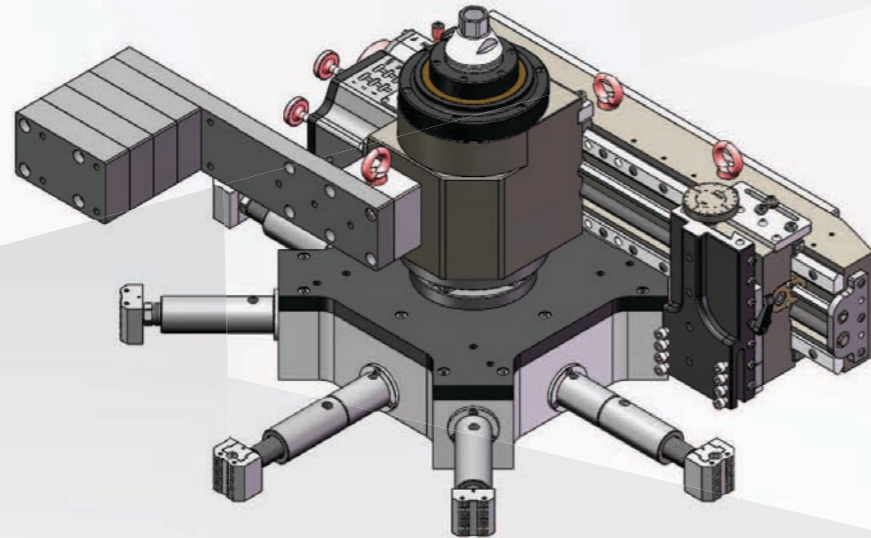


## FI1000 Flange Facing Machine

153-1000mm (6"-40")



FI1000 is an ID mounted and robust flange facing machine capable of producing 6 different continuous groove gramophone finishes to ASME Standard. It has a working range of 153mm (6") to 1000mm (40"). The mounting bases come in three sizes and have micro-adjustable jaws to help quickly align the base during set-up. Air motor and servo motor are optional. It can machining standard FF and RF flange facing, RTJ and other V grooves, welding reparations, etc. The FI1000 Flange Facer are suitable for the oil and gas industry, power plants, chemical plants, offshore and many others.

### Features

- High precision NSK bearings and V linear guide make the machine precise and robust
- Modular designed, compact and portable
- ID Mounted and operates in any direction
- Light weight & Rigidity body 7075 Alu
- Suitable for various flange type: flat face, raise face, ring type joints(RTJ), Tongue & groove, compact flanges
- MODEC air motor and Panasonic electric servo motor drive for option
- 6 continuous groove facing feeds for a gramophone finish (ASME Standard)
- 3 different sized quick set independent bases for improved on-site operation
- 360° swivel tool post for groove details
- Steel case package, easy to storage and move

### Specifications

Model	FI1000P	FI1000E
Driven	Pneumatic	Electric - Servo
Motor	MODEC Air Motor	Panasonic Servo Motor
Power Supply	1.8m <sup>3</sup> /min (65CFM)@0.6Mpa (90psi)	220-240V 1PH 50/60HZ
Motor Power	2.3HP	1500W
Min. Facing Dia.	153mm /6"	
Max. Facing Dia.	1000mm / 40"	
Min. Clamping Dia.	145mm / 5.71"	
Max. Clamping Dia.	910mm /35.82"	
Tool Post Travel	102mm /4"	
No. of Feed Settings	6	
Max. R.P.M	33	40
Machine Weight	68 Kgs (W/o base)	75 Kgs (W/o base)
Shipping Weight	330 Kgs	350 Kgs
Package	Steel Case	Steel Case
Shipping Dimensions	1250*650*610mm	1250*650*780mm

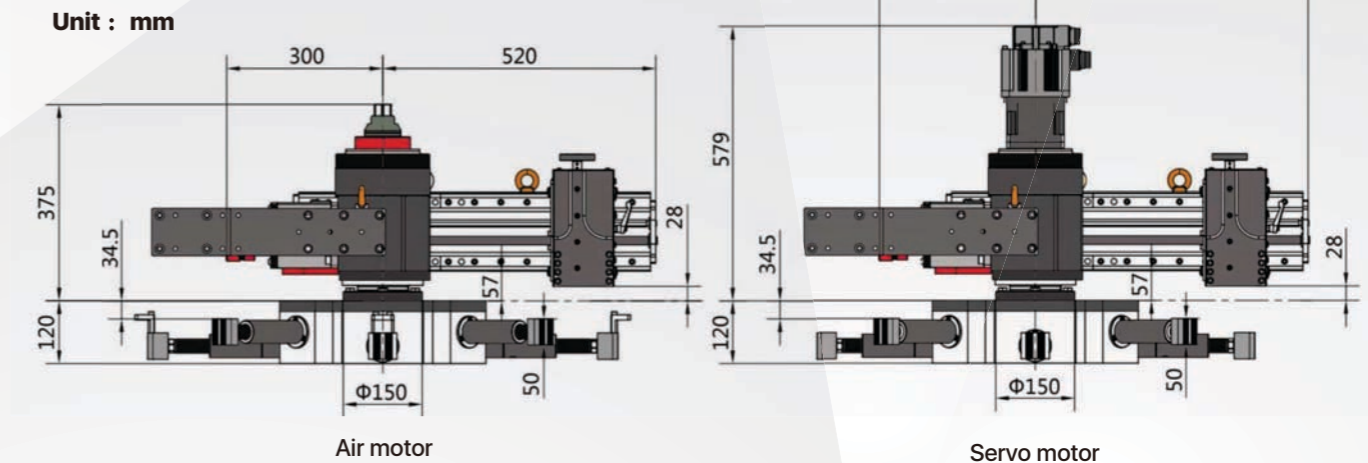
#### Facing Feed Rates & Grooves per Inch

Direction	Gear	mm/rev.	Inches/rev.	Grooves/Inch
In	1	0.1428	0.0056	178
In	2	0.2298	0.0090	111
In	3	0.4959	0.0195	51
Out	1	0.1055	0.0042	241
Out	2	0.1698	0.0067	150
Out	3	0.3664	0.0144	69

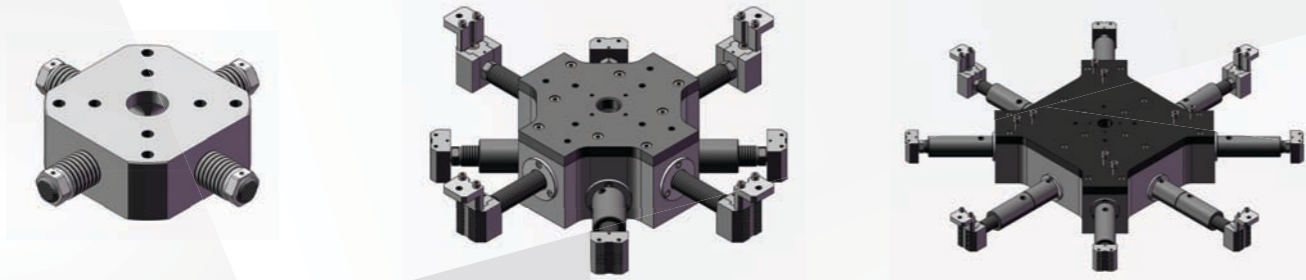
#### Boring Feed Rates

3 off up/down	Gear	mm/rev.	Inches/rev.
In	1	0.0397	0.0016
In	2	0.0638	0.0025
In	3	0.1377	0.0054
Out	1	0.0293	0.0012
Out	2	0.0472	0.0019
Out	3	0.1018	0.0040

### Dimension Figure



**3 sized quick set independent bases for improved on-site operation**  
View of the 3 bases assemblies provided

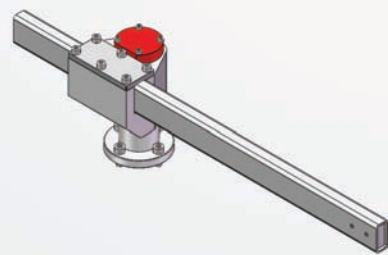


### Standard Supply

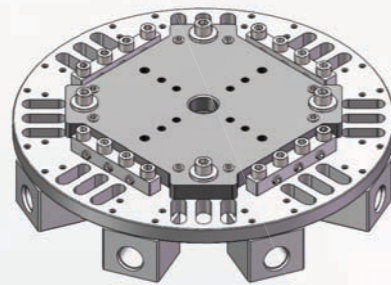
Main Body-c/w Motor	Full set Clamping Screws
S- Base	Full set extensions
M-Base	Full set hand tool
L-Base	Air motor lubricating oil
Tool Post	Air Filter Lubricator-SMC
Extension Tool holder	Hose connection
Cutting tips - 5 pcs	Dia Gauge
Counterweight	Storage / Shipping case-steel
Counterweight plate	Manual
Extension nut	



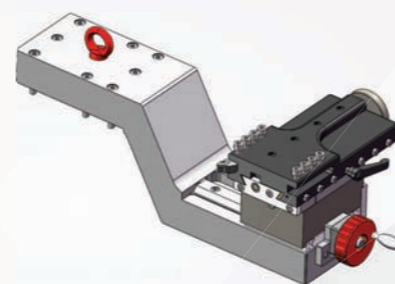
### Heat Exchanger Accessories



**Turing Tool**

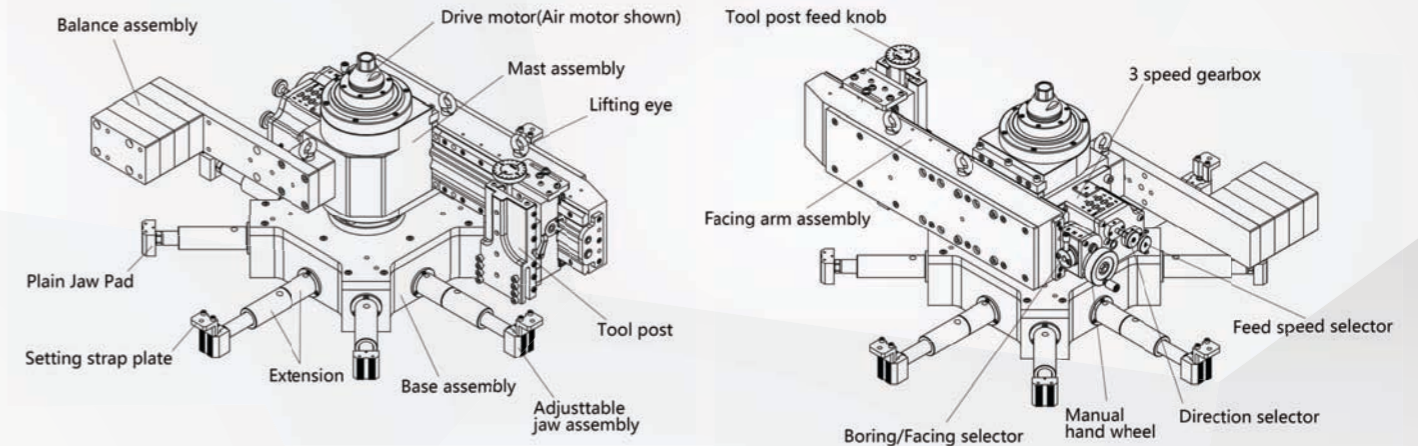


**Mounting Plate**



**Back facing tool holder**

### Configuration



### Application

